



Senior Family Night  
The College Application Process  
August 20, 2024

Walton High School



WALTON HIGH SCHOOL  
SCHOOL COUNSELING DEPARTMENT



**CHECK OUT**  
OUR WEBSITE



**FOLLOW US**  
ON SOCIAL MEDIA



# Counselor Assignments



Laura Clary  
A - Ch



Betsy Alpert  
Ci - G



Donna Dunham  
H - K



Erica Watford  
L - N



Tina Harwood  
O - Sl



Lisa Fay  
Sm - Z

# Counseling Personnel



**Stacy Ambles**  
504 coordinator

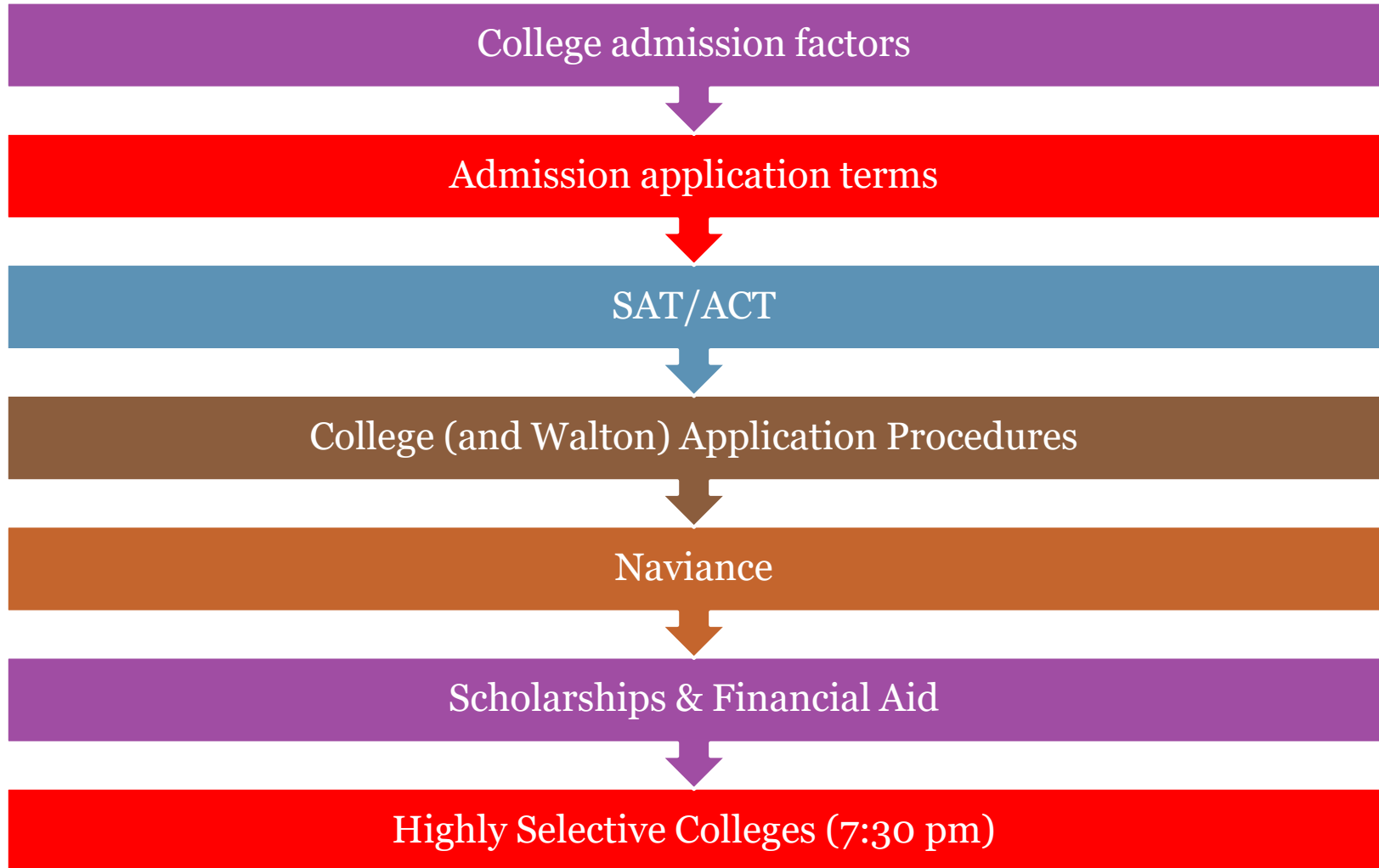


**Rebecca England**  
College advisor  
Volunteer service hours



**Melissa Schrenk**  
Records clerk

# Presentation overview



# Factors for College Admission

**Extracurricular  
Activities**

**Essays**

**Letters of  
Recommendation**

**Demonstrated  
Interest**



**RIGOR OF CLASSES**

**GRADES & GPA**

**TEST SCORES**

# Building a College List

Reach Schools

Apply to 1 or 2

Match Schools

Apply to 2 or 3

Likely Schools

Apply to at least 2 or 3

“**Reach schools**” are those where your academic credentials fall below the school’s range for the freshman class.

“**Match schools**” are schools where your academic credentials fall within or perhaps slightly exceed the school’s range for the freshman class.

“**Likely schools**” are schools you will almost definitely get into because your academic credentials are much better than the typical range for their freshman class.

# Other Factors to Consider

Size and diversity of student body

Location

Academic programs

Campus life —  
athletics, activities,  
housing

Graduation and  
retention rates

Internships, study  
abroad, research  
opportunities, job  
placement

Financial aid and  
scholarship  
opportunities

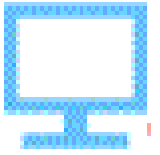
*Above all, think about  
where your child will  
be the most happy  
and successful in their  
college life.*



# Application Types: Common App



- The Common App (CA) is a free admission application that applicants may use to apply to any of the 1,000 + member colleges and universities.
  - Each individual college charges its own application processing fee.
- Students must
  1. Create a CA account
  2. Add a college to CA
  3. Waive FERPA rights and match CA account in Naviance (click here for directions)
- In CA, students may monitor submissions of their documents and check when the college has downloaded them.



# Application Types: College's Own Application/Direct to Institution

- Some colleges have their own school-specific application found on the college's undergraduate admissions website
- Students must manually add these schools to the “Colleges I’m Applying To” list in their Naviance accounts
- Example colleges
  - Georgetown University
  - MIT
  - Chattahoochee Tech

# Application Deadlines

## Regular Decision

- Deadline date established by the institution

## Early Decision (I & II) : Binding

- Cannot apply **ED** to other colleges, can only apply regular decision.
- If accepted, must attend (BINDING)

## Early Action: Non-Binding

- Can apply early to other colleges, can apply for regular decision

## Single Choice/Restricted Early Action: Non-Binding

- Cannot apply early to other colleges, can apply for regular decision

## Rolling Admission

- Open admission, decisions are given throughout the year, not at a specific time

## Priority Deadline

- Similar to rolling admissions but priority is given to those applicants who meet the earlier priority deadline

# Standardized Testing Policies

- Standardized testing policies are posted on their websites.
- **If** scores are not required, the college will look for other criteria, such as a higher GPA, in making an admission decision.
- **If a student believes it will enhance their application – they should submit them.**
- **IF a student does NOT want to submit scores – they do not need to.**
- **SOME Georgia public colleges** require test scores for admission this year. Some colleges only require test scores if GPA is below a certain point.

# Sending SAT/ACT Scores

- SAT/ACT scores must be sent directly from the testing agency websites
  - SAT: [www.collegeboard.org](http://www.collegeboard.org)
  - ACT: [www.actstudent.org](http://www.actstudent.org)
  - Walton's CEEB code: **111987**
  - Order test scores to **meet** the college deadline – timing matters; scores not sent immediately. Scores are sent electronically.

# Upcoming Test Dates (2024-2025)



**SAT**



## All Digital

- August 24\*
- October 5
- November 2\*
- December 7
- March 8\*
- May 3
- June 7

- September 14\*
- October 26
- December 14\*
- February 8\*
- April 5
- June 14
- July 12

- \*\*\*Test dates at Walton\*\*\*
- Test dates subject to change/cancellation
- Check college website for test deadlines!

# Teacher Letters of Recommendation

Check if a letter of recommendation is required. If the college does not accept one, **do not** send one! Only send what the college requests.

Colleges recommend letters come from *11th or 12th* grade teachers in *academic subjects*.

1. Students ask their teachers in person
2. Teacher agrees, student completes the teachers the **Teacher Recommendation Form**
3. Student **manually adds teachers** into their Naviance account and specifies the teachers write for all colleges or for specific colleges only

**ALL** recommendation **requests** are due by **September 1<sup>st</sup>**

# Requesting Transcripts: 2 Step Process

- 1. Students add colleges in Naviance and indicate the type of application they will use.
  - For CA colleges, students MUST [link](#) their CA account to their Naviance account and waive their FERPA rights
  - For non-CA colleges, students must add colleges to [“Colleges I’m Applying To”](#) list in Naviance
- 2. Students complete a transcript card in the Records Room (located in the counseling office) and pay \$2.00 per transcript requested (cash or check only)

**It is your student's responsibility to complete ALL parts of the above process, or transcripts cannot be sent!**



# College Campus Visits:

- Most colleges host on-campus tours/offer virtual tours)
  - Fall break - great time to tour college campuses.
  - Sign up for the college mailing list – open email and read it (Colleges may use email to track demonstrated interest)
  - Email/speak with admission counselor
  - Ask about financial aid/speak with financial aid officer
  - Inquire if your student can sit in on a class of interest
  - Talk to students and faculty
  - Seniors get 2 excused college campus visits (must turn in an official letter from college to the attendance office)

# College visits at Walton

- Each year, over **130** college admissions counselors come to Walton
- College visits at Walton provide students an opportunity to:
  - Introduce themselves to the college rep – the rep may be the one who reads their application
  - Come prepared to ask thoughtful questions – great way to make a good first impression and show demonstrated interest
- Students sign up with this QR code or use this [link](#)



# Naviance Stats - Walton Applications

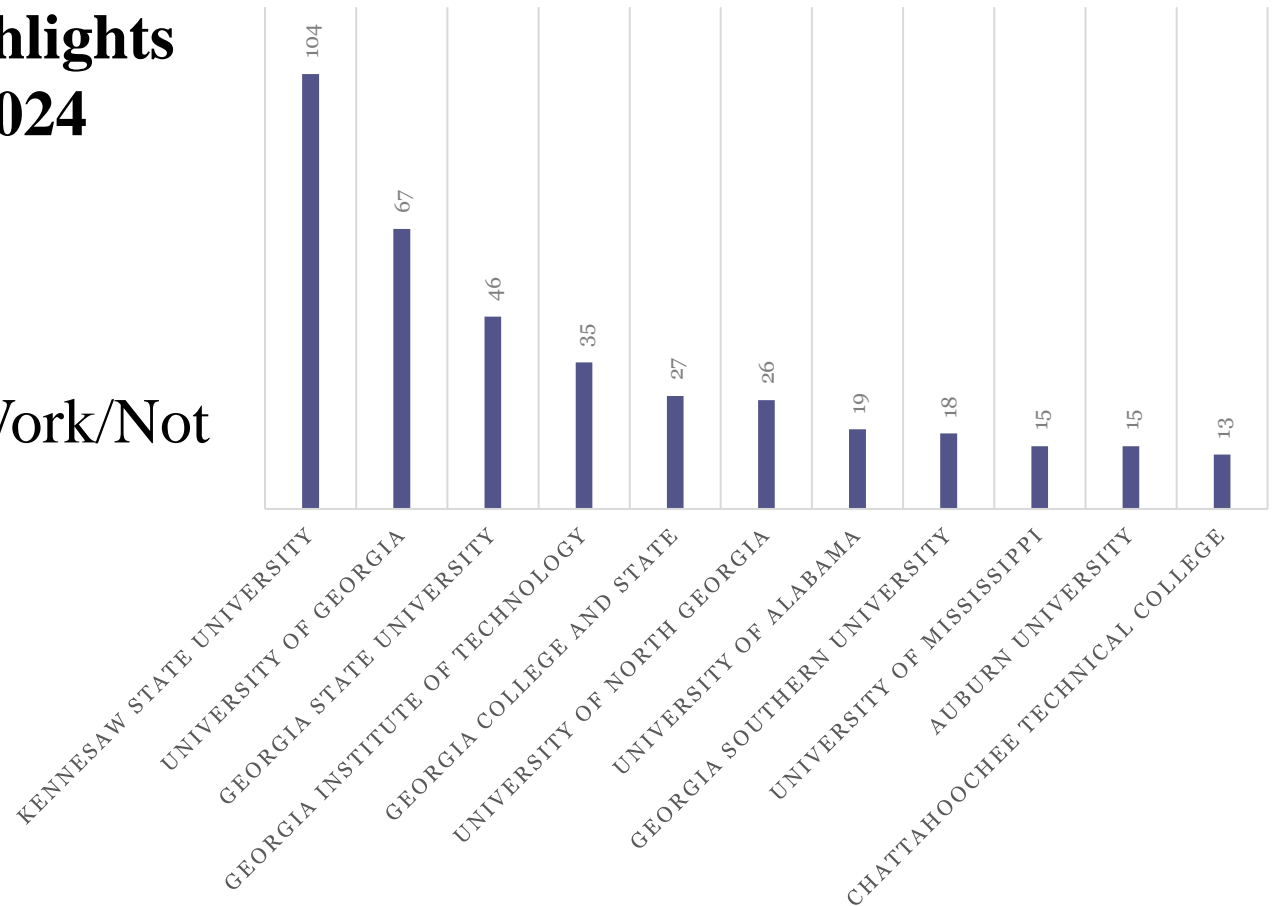
## TOP COLLEGES WHERE WHS CLASS OF 2024 MATRICULATED

### Outcome Highlights Class of 2024

4 year — 92%

2 year — 3%

Military/Gap /Work/Not  
reported — 5%



# University of Georgia Admissions

“Demonstrated academic achievement” is the primary factor in first-year admission decisions.

Approximately 75% is from grades and the rigor of the school curriculum.  
Approximately 25% are standardized test scores.

## **First Year - UGA Undergraduate Admissions**

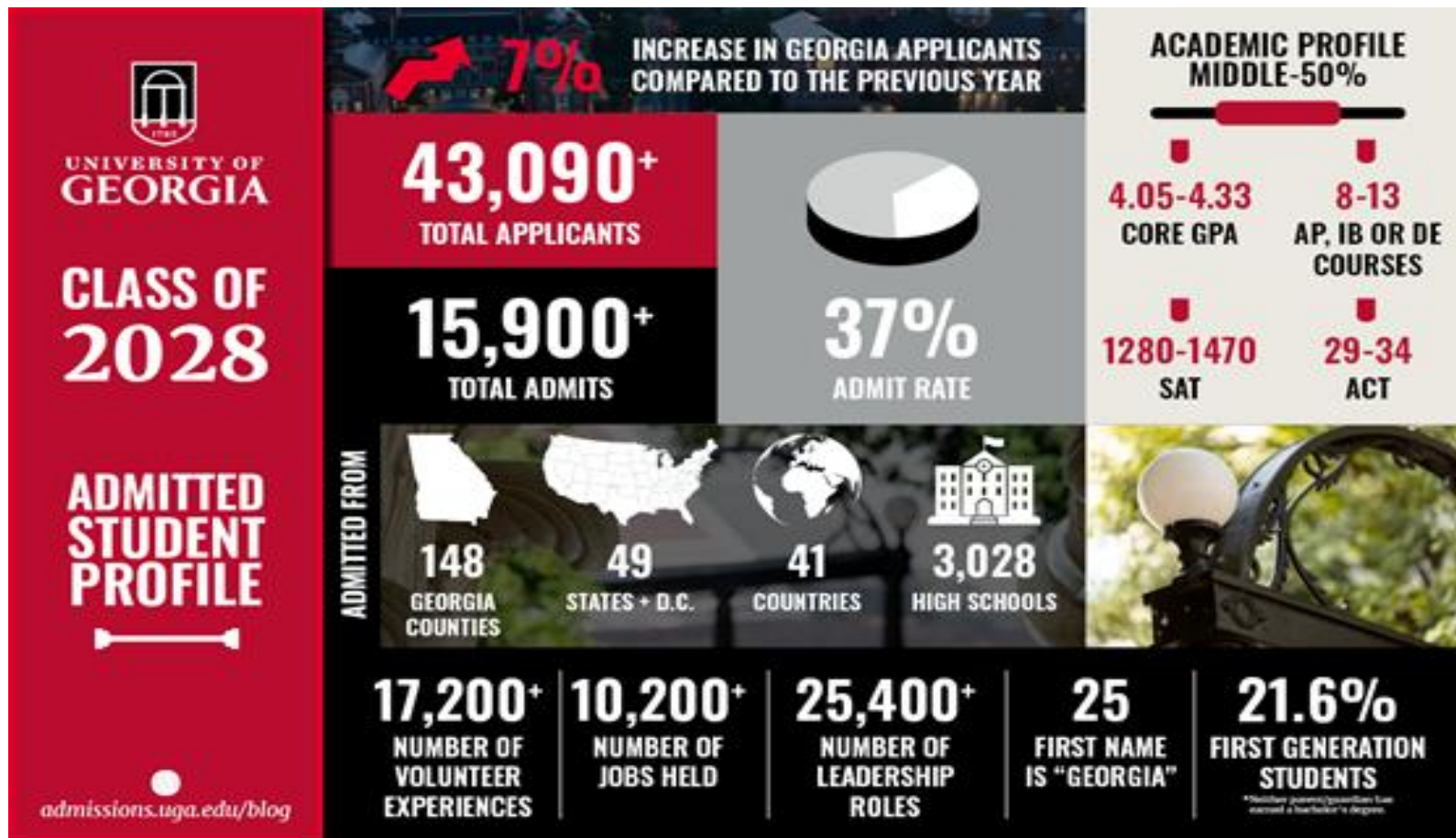
### **Early Action (due 10/15) vs. Regular Decision (due 1/1)**

“Ask yourself: if by October 15, are you ready for UGA to look at your file. If you feel you would like to have more time to work on your application beyond 10/15, or if you want to send your fall grades or later test scores before we initially look at your file, you should think about applying RD.”—David Graves, Director of Undergraduate Admissions, UGA

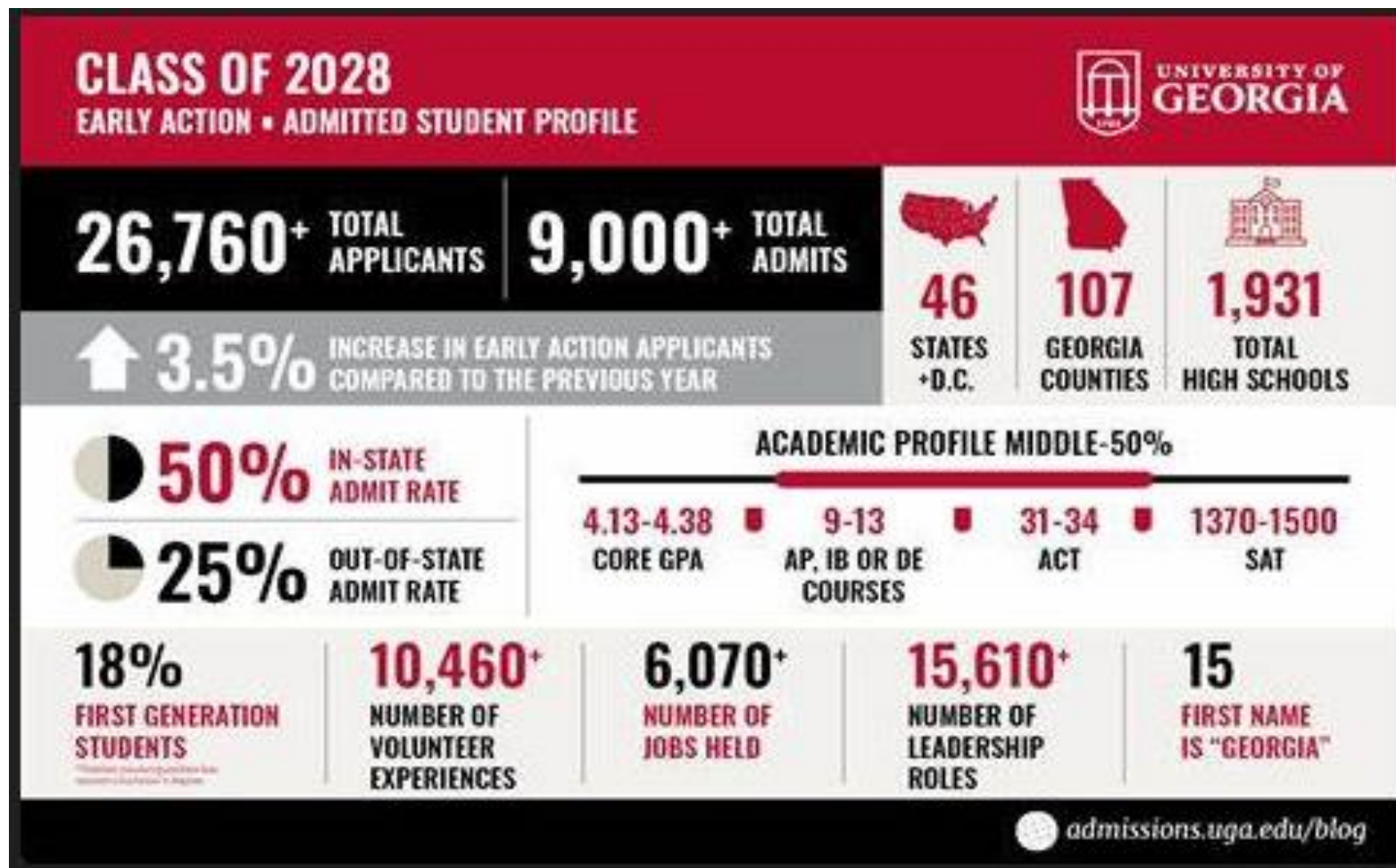
“Our rule of thumb is that if you have both taken the test by 10/15 and have put UGA as a score recipient by 10/15, this will give enough time for the scores to get to UGA for us to use them in our EA review.”

[2024 Early Action FAQ - UGA Undergraduate Admissions](#)

# UGA Admissions EA and RD



# UGA EA Admitted Student Profile



# UGA Admissions

## **Walton Class of 2024 Stats (self-reported):**

Applied: 304 students

Accepted: 136 (45 %)

Enrolled: 67 (22%)

## **2024 WHS Accepted Student Avg:**

SAT: 1379 RD/1443 EA

ACT: 33 RD/31 EA

GPA: 4.15 RD/4.38 EA

# Georgia State Admissions

## **Freshman profile** *(Based on the middle 50% of admitted class)*

- High School Core GPA: 3.24-3.76
- SAT: 1030-1220
- ACT : 20-26

## **Walton Class of 2024:**

- Atlanta campus:
- 190 applicants; 143 admitted; 45 enrolled
  - WHS Accepted Stud Avg:
    - SAT: 1252 RD/1316 Early
    - ACT: 24 RD/28 Early
    - GPA: 3.53 RD/3.89 Early

### **Timeline:**

- Honors and Scholarship priority deadline-Nov. 15th
- Admission Decisions—begin release on Dec. 15
- Final application deadline-April 1

\*\*Students can use the Panther Predictor on the Georgia State website to calculate their Freshman Index:  
[First-year Bachelor's Degree Application - Georgia State University \(gsu.edu\)](#)

### **Test Scores (optional, in some cases):**

**Georgia State is test-optional through Summer 2025** for students whose high school GPA is 3.4 or higher.\*  
If your high school GPA is below 3.4, you should submit test scores meeting GSU min.



# KSU Admissions

## Requirements:

- **Minimum 3.2 GPA (test optional); 2.5 GPA (with qualifying test scores) based on the required HS coursework** (4 units English, 4 Math, 4 Science, 3 Social Science, 2 units in same World Language)
- **SAT minimums:** 500 Reading and Writing Score; 490 Math
- **ACT minimums:** 18 English or 18 Reading and 18 Math

## Walton Class of 2024:

- **Total Applications: 300**
- **Total Accepted: 233**
- **Enrolled: 106**
- **WHS Accepted Stud Avg:**
  - SAT: 1269 RD/1203 Early
  - ACT: 26 RD/21 Early
  - GPA: 3.71 RD/3.6 Early

## Timeline:

- **Priority deadline for admission – November 1**
- **HONORS College Application—Opens after acceptance into KSU; Deadline—May 31**
  - **If you have a 3.5 or above apply for the Honors Program**

# Financial Aid Planning- FAFSA

- Free Application for Federal Student Aid (**FAFSA**)
- Submitted annually to determine eligibility
- Includes sections for parent and student to complete
- FAFSA goes live on December 1, 2024
  - For HOPE, families also encouraged to complete the GSFapp in GA Futures.
- Check the “**Net Price Calculator**” on the college website to determine the EXPECTED Family Contribution (EFC)-- the estimated amount student will have to pay to attend that institution

# Need Based Financial Aid

- Types of Student Financial Aid:
  - **Grants:** Federal/State/College
  - **Loans:** Federal (in student's name)
  - **Loans:** Private (in parent's name)
  - **Work Study Opportunities**

## *Resources:*

- [How to pay for college in 4 steps \(collegeessayguy.com\)](https://collegeessayguy.com)
- [Seven Major FAFSA Changes: What Families Need to Know | Kiplinger](#)
- [Industry professionals | Sallie Mae](#)
- [12 Steps to Completing the FAFSA Form for School Year 2023-2024 | SoFi](#)

# Steps to Institutional Aid: CSS Profile

- Many private colleges require the CSS Profile in addition to the FAFSA
- CSS Profile: Available **October 1, 2024**
  - Fee: \$25 Original Application Fee-One College
  - \$ 16.00 additional college or program

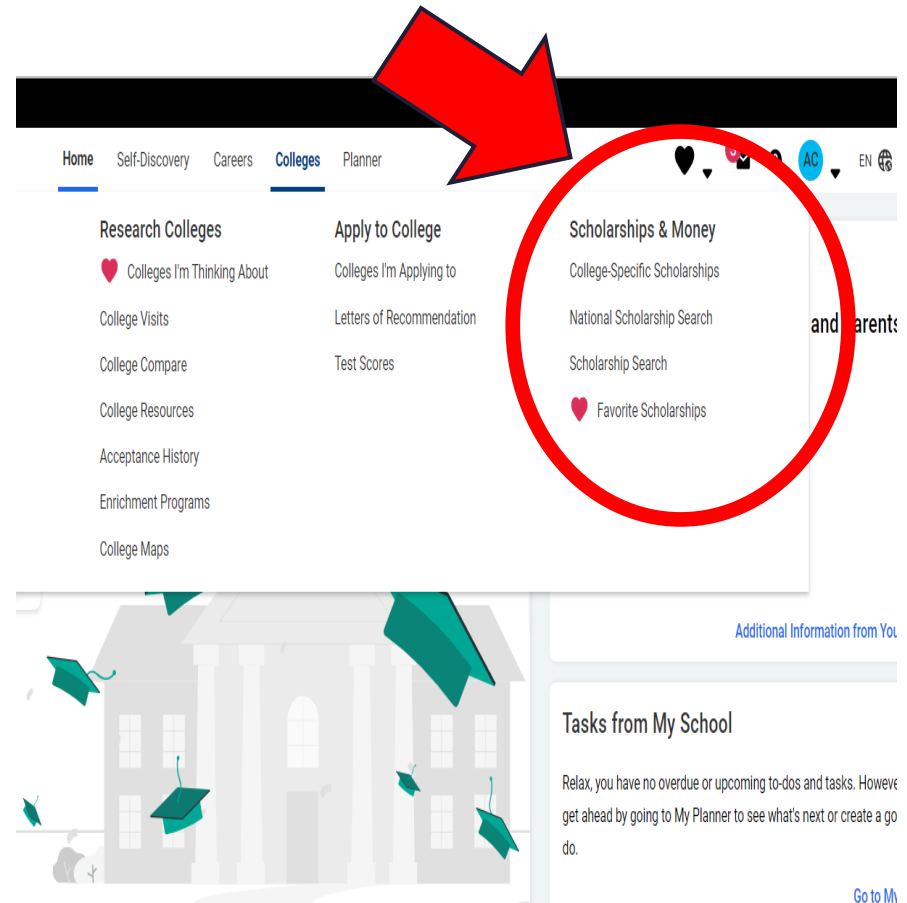
# Scholarships

## Types of Scholarships:

- Merit, Athletic, Organizational, Music, Leadership, etc.

## Where to look for Scholarships?

- Prospective College's Websites
- National Database in Naviance
- School list in Naviance
  - Check for nominating scholarships
    - i.e. Jefferson, Wells, Belk
    - Scholarship Committee will decide on who Walton will nominate.
- Scholarship Websites
- [Walton's scholarship website](#)



# HOPE Requirements

- **HOPE Scholarship**

- 3.0 GPA for academic courses: English, Math, Science, Social Studies, and World Language.
- Historically, has covered approximately 80% of tuition at Georgia public colleges

- **Zell Miller Scholarship**

- 3.7 GPA for academic courses AND
- 1200 on SAT (Reading and Math, 1 sitting) OR 25 on ACT (1 sitting)
- Covers full Tuition at Georgia public colleges

**The Class of 2025 is required to have FOUR rigorous courses to be eligible for the HOPE and/or Zell Miller Scholarship.**

**WE MUST HAVE YOUR STUDENT'S SOCIAL SECURITY NUMBER ON FILE TO SUBMIT ACADEMIC RECORDS FOR HOPE ELIGIBILITY!**

# Financial Aid Night

## Financial Aid Overview

Walton Theatre

Monday, October 21st 6:30 *p.m.*

*Speaker: Anna Roberts,*

*Georgia Student Finance Commission*

# NCAA - Visit [eligibilitycenter.org](https://eligibilitycenter.org)



**Guide for the  
College-Bound  
Student-Athlete**

- RESOURCES
- Review the [COVID-19 FAQ](#)
- Download the following:
  - [Guide for the College-Bound Student Athlete](#)
  - [Initial-Eligibility Flyer](#)
  - [DI Academic Requirements](#)
  - [DII Academic Requirements](#)



# Final Steps and Making a Decision

Try to visit colleges where your child has been accepted before they choose to attend.

Compare financial aid packages.

Send deposit and apply for housing.

Get ready for graduation!

Have student request final transcript before Graduation and complete BRIDGE Survey

Congratulations, your student is off to college!

# Walton Class 2025 Webpage on Counseling Website



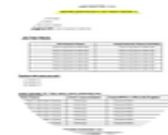
## Class of 2025



[Step-by-Step College Application Guide](#)



[Teacher Letter of Recommendation Form](#)



[Postsecondary Options Packet](#)



[Everything You Need to Know About Naviance](#)



[Georgia Match](#)



[Senior Presentations](#)

[Walton Class 2025 Info](#)

<https://www.waltonhighcounseling.com/class2025>

# QUESTIONS?

Thank you for coming!

We hope your student has a wonderful senior year!

---

We will have a brief Question & Answer period  
followed by the  
Highly Selective College Presentation  
in **10 minutes.**

There also will be a Q&A period after the  
Highly Selective Presentation as well.

# Highly Selective College Presentation

Will begin in  
a few  
minutes

# HIGHLY SELECTIVE COLLEGES

- What does "highly selective" mean?
  - Colleges that usually admit **fewer than 25%** of their applicants are **highly selective** (about 50-60 colleges in the US)
  - Any school that has an acceptance rate of **less than 30%** is still **very selective**
  - Any school with an acceptance rate of **less than 15%** is a **reach school**, even for the best students

# Selective and Highly Selective Colleges

- **Selective colleges** – admit a small percentage of students who apply
  - **Highly selective colleges** – admit 10% or fewer applicants
  - **Extremely selective colleges** - looks for a certain specialized type of applicant
    - Examples: Juilliard and West Point
- All look for students with excellent credentials overall.

# Are you a potential candidate for Highly Selective Colleges?

- Analyze Walton's scattergrams and the colleges' admitted student profiles.
- If your GPA and test scores put you in range, Bingo!

“At the end of the day, the college admissions process is about selecting students who can handle the rigors of the institution’s courses and graduate on time. This is why grades, and the difficulty of students’ course load are the most important things colleges consider.”

[www.ivywise.com](http://www.ivywise.com)

# If you are a candidate, then what?

- They are looking for unique academics, amazing extracurriculars, leadership accomplishments, enthusiastic letters of recommendation, and compelling personal statements
- Find a way to demonstrate your value as a member of the college community
- These schools appreciate passion, drive, and outside-the-box thinking

◦

Adapted from [www.CollegeData.com](http://www.CollegeData.com)



# A Speciality- A New Focus

- Colleges want to build a well-rounded class made up of specialists
- While tens of thousands apply, it is those with a **demonstrated specialty** that stand out
- Whether it's music/art/STEM or some other area of interest, applicants who dedicate their time to something they really love and articulate how they plan to pursue that same passion on campus, are more likely to get noticed

# Demonstrated Interest

**DEMONSTRATED INTEREST** --- cannot emphasize this enough  
**BUT** -- demonstrated interest looks different at the top schools.

- The IVIES have all announced they do **NOT** track your demonstrated interest in on-campus visits or how many times you click on their emails/sites
- IVIES are looking at your answer to the “why us?” in your essay
- **MOST IMPORTANT** -- being able to articulate your rationale to attend their school based on your thorough research of their school (being able to articulate “why Harvard” or “why Yale” as your rationale to attend their school)

# Testing still matters - a lot

- Definite advantage for those with strong scores.
- Even though many schools were “test-optional” last year, those with scores were stronger candidates than those without.

**EXAMPLE:** 3 of 4 students accepted at Penn submitted test scores.

# GO EARLY ..... or go home

- YES, YES and YES.
- YES - this is a huge commitment
- YES - the data supports this strategy
- YES - schools are filling up their open slots, and it is in your best interest to go early

# GO Early...How big of an advantage?

- Most competitive colleges in the United States offer some form of **Early Action/Early Decision**. We continue to see a definite advantage. In fact, you can sometimes increase your odds of acceptance significantly over **Regular Decision**, with BINDING options (ED or REA or SCEA) being the greatest option.
  - At the top 100 colleges, including the Ives, going early has a 2 to 4 times greater advantage for admission.
  - ED applicants have fewer students to be compared to. Admissions officers have more time to spend on reading your application.
  - ED clearly shows demonstrated interest!

## **Examples:**

- Yale received 7,744 ED applications vs 44,506 Regular Decision
- Amherst received 692 ED applications vs 12,008 Regular Decision

# EARLY Choices: Let's review

- **Rolling Admission**: you submit your application and receive a decision in 4-8 weeks.
  - e.g. Penn State, Marquette, U of Pittsburg
- **Early Action (EA)**: submit your application by early deadline (Oct 15 – Nov 15) and receive a decision by December.
  - e.g. UNC, Michigan
- **Restrictive Early Action (REA)**: is a middle ground; places a condition on Early Action where you cannot apply anywhere Early Decision. Additionally, other restrictions may apply. But it is non-binding.
  - e.g. Stanford, Notre Dame, Georgetown

# More EARLY options

- **Single Choice Early Action (SCEA)**: like REA, but you cannot apply to other private school's Early Action, but you can apply to non-binding public schools.
  - e.g. Yale, Princeton, Harvard
- **Early Decision (ED)**: apply to one school; it is binding and if accepted, you will attend and withdraw all other applications. Deadlines November 1 – 15<sup>th</sup>; receive decision mid-December.
  - \*\*e.g. 5 of the 8 Ivies accept ED

# Last Early option

- **Early Decision II (EDII)**: a second opportunity to apply Early Decision. You apply in early January and will receive a decision in mid-February. It is binding, if admitted you must attend.



# Johns Hopkins University

- Great example is their approach:
- "We are looking to create a class of students who have different interests and perspectives because we believe that diversity of thought encourages original research ideas and meaningful collaboration within the Hopkins community."
- Holistic review – building a diverse class
- Check out their video: The Application Explained:
- [Admissions Tips: How We Review Applications - YouTube](#)

# The Interview

- An alumni or admissions officer interview is often a required part of the application process. If not required, but recommended or optional, we encourage you to sign up for one.
- Interviews may be evaluative: the school will assess you as a potential student
- Interviews may be informative: the school will share information about their institution
- Requests for interviews to occur on Walton's campus must be coordinated through [Dr. England](#)

# The Interview: Tips

- Interviews usually take place in the fall
- They may be in person or virtual
- Last 30 to 60 minutes
- Be yourself (try and be relaxed)
- Research ~ Prepare ~ Practice
  - Learn about the school through their website
- Be inquisitive.
  - Ask questions about the major you are interested in, specific departments, things you may not have learned from the website: campus culture/traditions
- Dress appropriately/business casual

◦

◦

# Selective College Scholarships that Require a Nomination

- Certain colleges across the US offer highly selective scholarships for high school seniors that require a nomination from a school official and are typically limited to 1 or 2 nominations per high school. They all require exceptional grades and test scores, active school involvement, and strong leadership experiences.
- **Beyond these qualifications, each one is looking for an outstanding strength or accomplishment such as original scientific research, spearheading a new organization, or an impressive leadership achievement.**

# Selective College Scholarships that Require a Nomination (cont.)

- University of Virginia – Jefferson Scholars
- Davidson College – Belk Scholarship
- Indiana University – Wells Scholars

Other selective scholarships (nomination not required):

- Boston University – Trustee Scholarship
- Washington University in St. Louis – Danforth Scholars
- University of Notre Dame – Hesburgh-Yusko Scholars
- University of North Carolina and Duke- Robertson Scholars

# Georgia Tech Admissions Factors

## **Holistic Application Review:**

- Academic Preparation
- Contribution to Community
- Personal Essays
- Recommendation Letters
- Standardized Test Scores – self-reported
- Interview – only for international applicants
- Institutional Fit
- Major Selection
- Discipline review

## **Timeline:**

- Oct 16th-Early Action deadline (GA residents)
- Jan 4th-Regular Decision deadline
- Jan 31st-Priority Financial Aid deadline

\*\* Excellent information on the [Georgia Tech website](#) about each of these categories

# Georgia Tech Admissions

[admission.gatech.edu/admission-snapshot](https://admission.gatech.edu/admission-snapshot)

## Overall GA Tech Stats for Fall 2023 Enrollment

- 52,354 total applications
- Overall admit rate 17%
- Georgia residents Admit rate 36%
- Non-Georgia Admit rate 12%
- International Admit Rate 10%
- 55% Men and 45% Women
- 10% are First Generation (neither parent graduated from college)
- Total enrollment 3,750 \*a record number (500 will start in summer 2023, 100 will begin at GT-Europe or GT-Oxford, England)

**Note:** If a student is an international student (not a US Citizen or Permanent Resident), their application will be reviewed with their home country cohort.

# GT - Walton Stats

## FIRST-YEAR CUMULATIVE GPA

3.5

## DEGREES AWARDED TO STUDENTS

282

## MOST POPULAR MAJORS

Biology  
 Business Administration  
 Computer Science  
 Industrial Engineering

## FALL SEMESTER ENROLLMENT

1 <sup>st</sup> Year Students	13
2 <sup>nd</sup> Year Students	43
3 <sup>rd</sup> Year Students	85
4 <sup>th</sup> Year Students	96
<b>Total Students</b>	<b>237</b>

## FIRST-SECOND YEAR AVERAGE RETENTION RATE

98.7%

## FIRST-YEAR ADMISSION STATISTICS: Summer 2018 - Fall 2023

	Applied	Admitted	Enrolled	SAT (avg.)*	HS GPA (avg.)*	ACT (avg.)*	Rigor (avg.)*
<b>Institute</b>	261,743	49,924	20,380	1444	4.1	32	10.7
George Walt..	1,086	306	189	1532	4.1	34	13.8

\*Averages for admitted (enrolled) student populations only

**\$89,942**

AVERAGE STARTING SALARY

**#1**

IN CAREER PLACEMENT  
 (THE PRINCETON REVIEW)

**#1** IN GEORGIA AND **#11** AMONG ALL U.S. COLLEGES FOR PROVIDING  
**THE BEST 20-YEAR RETURN ON INVESTMENT**

FAYSCALE.COM

**98%**

FIRST-YEAR RETENTION RATE





# Ivies Early Action & Early Decision

Early Rounds	2024			2023			2022			
	Ivies ▲	Admit ▼	Applied ▼	% ▼	Admit ▼	Applied ▼	% ▼	Admit ▼	Applied ▼	% ▼
Brown ED		800	4,562	17.5	769	4,230	18.18	738	3,501	21.08
Columbia ED					650	4,461	14.57	650	4,085	15.91
Cornell ED		1,576	6,615	22.6	1,395	6,159	22.65	1,533	6,319	24.26
Dartmouth ED		526	2,069	26.4	574	2,474	23.20	565	2,270	24.89
Harvard SCEA		895	6,424	13.9	935	6,958	13.44	964	6,630	14.54
MIT EA		687	9,291	7.4	707	9,600	7.36	664	9,557	6.95
Penn ED		1,269	6,453	19.7	1,279	7,110	17.99	1,312	7,074	18.55
Princeton SCEA		791			743	5,335	13.93	799	5,402	14.79
Yale SCEA		796	5,777	13.8	794	6,020	13.19	842	5,733	14.69
<b>Total Ivies</b>		<b>7,340</b>	<b>41,191</b>	<b>17.33</b>	<b>7,139</b>	<b>42,747</b>	<b>16.70</b>	<b>7,403</b>	<b>41,014</b>	<b>18.05</b>

**@2024 Top Tier Admission**

# Selective schools by the #'s

School	Class of 2028			Class of 2027			Class of 2026		
	Admitted	Applied	Rate	Admitted	Applied	Rate	Admitted	Applied	Rate
American	10,243	18,624	55.00%	8,353	18,984	44.00%	7,883	19,416	40.60%
Boston College	5,200	35,475	14.66%	5,645	36,537	15.45%	6,748	40,494	16.66%
Boston University	8,414	78,634	10.70%	8,612	80,484	10.70%	11,434	80,792	14.15%
BYU	8,915	12,976	68.70%	8,402	12,061	69.66%	7,740	11,709	66.10%
Brown	2,519	48,898	5.15%	2,686	51,316	5.23%	2,562	50,649	5.06%
Caltech	315	NA	NA	412	13,134	3.14%	448	16,626	2.69%
Case Western	NA	NA	NA	11,193	39,039	28.67%	10,607	38,701	27.41%
Columbia	2,319	60,248	3.85%	2,285	57,126	4.00%	2,253	60,377	3.73%
Cornell	5,139	NA	NA	5,358	67,846	7.90%	5,168	71,164	7.26%
Dartmouth	1,685	31,657	5.32%	1,797	28,841	6.23%	1,808	28,336	6.38%
Duke	2,790	54,191	5.15%	3,115	49,476	6.30%	3,085	50,002	6.17%

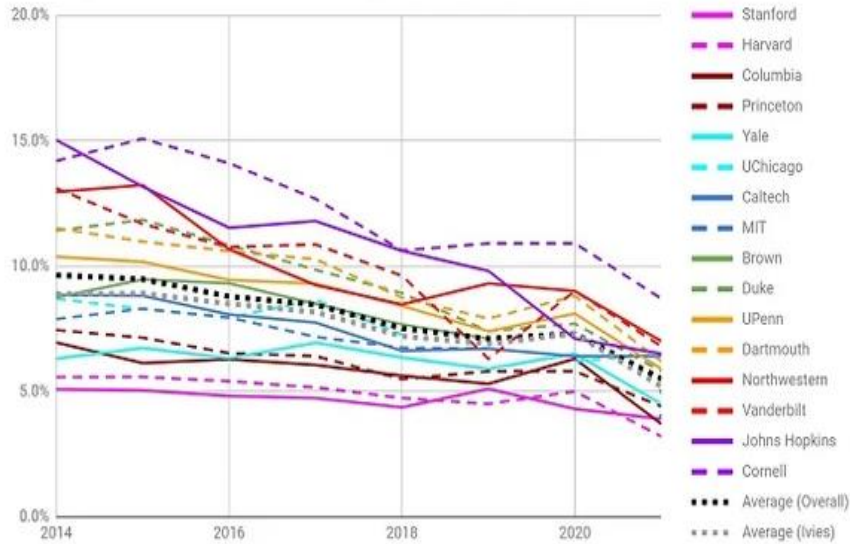
University	2022-23	2023-24	% Change	2022-23	2023-24	% Change	2022-23	2023-24	% Change
Florida State	16,748	76,748	21.82%	17,066	71,788	23.77%	19,552	78,088	25.04%
Fordham	25,014	43,885	57.00%	22,447	44,893	50.00%	25,550	47,203	54.13%
Georgetown	3,226	26,170	12.33%	3,263	25,519	12.79%	3,229	26,670	12.11%
George Washington	NA	NA	NA	NA	NA	NA	13,354	27,266	48.98%
Georgia	15,900	43,090	36.90%	15,340	43,700	35.10%	16,600	39,615	41.90%
Georgia Tech	8,366	59,760	14.00%	8,622	52,377	16.46%	8,673	50,601	17.14%
Harvard	1,937	54,008	3.59%	1,966	56,937	3.45%	1,984	61,221	3.24%
Johns Hopkins	1,749	38,100	4.59%	2,411	38,200	6.31%	2,408	37,100	6.49%
MIT	1,275	28,232	4.52%	1,291	26,914	4.80%	1,337	33,976	3.94%
Northeastern	NA	NA	NA	5,459	96,631	5.65%	6,191	91,000	6.80%
Northwestern	3,750	50,000	7.50%	3,656	52,225	7.00%	3,609	51,554	7.00%
Notre Dame	3,324	29,943	11.10%	3,399	28,351	11.99%	3,412	26,506	12.87%
NYU	NA	NA	NA	10,000	120,000	8.33%	12,810	105,000	12.20%
Penn	NA	65,230	NA	3,489	59,465	5.87%	3,549	54,588	6.50%
Princeton	NA	NA	NA	1,782	39,644	4.50%	2,167	38,019	5.70%
Rice	2,439	32,459	7.51%	2,447	31,059	7.88%	2,691	31,424	8.56%



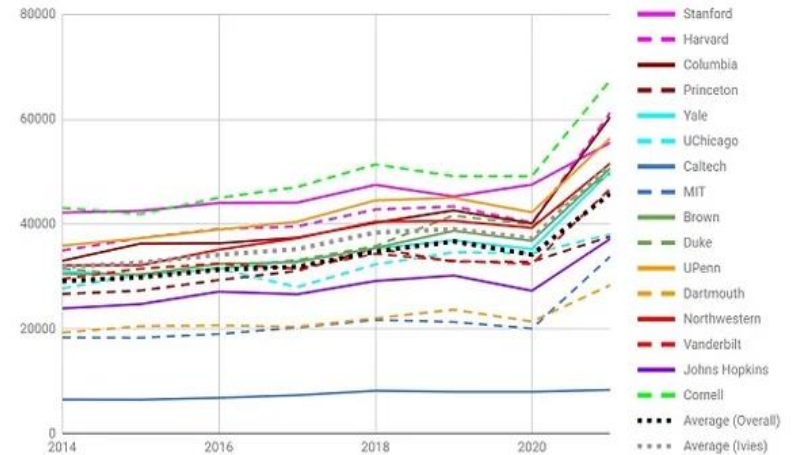
# The YIELD

- Yield informs acceptance rates
- Based on years of admissions data, schools know almost exactly how many students they need to admit to get the class size that they want
- This is the reason for waitlists
- In general, the lower the yield, the higher the acceptance rate
- Ivy acceptance rates do NOT vary huge amounts— Harvard 4.5% to Cornell 10.55%
- The Yield rates vary greatly

Ivy League Plus Acceptance Rates, 2014-2021



Ivy League Plus Applicants, 2014-2021



# YIELD trends

What does the data say?

1. Past admission rates aren't a guarantee of what admissions rates will be like in the future for top-tier schools.
2. It is helpful to look at the trends.
3. Clearly, admissions rates are going down
4. Applications are going up

Overall enrollments have stayed relatively stable over the last 8 years.

What else does the data say:

1. The lower the admission rate, the more selective the school is.
2. Leads to schools being higher ranked
3. Which leads to more people applying to top-ranked schools
4. Which leads to lower admission rates
5. And.....the TREND is continuing

With the top-tier schools - YIELD rates vary greatly from 45.5% to 97.1%

School	% Admitted	# Admitted	# Attending	Yield
<a href="#">Stanford</a>	3.9%	2,190	2,126	97.1%
<a href="#">Harvard</a>	4.0%	2,320	1,968	84.8%
Columbia	3.9%	2,358	1,569	66.5%
<a href="#">Princeton</a>	4.4%	1,647	1,290	78.3%
Yale	5.3%	2,509	1,786	71.2%
<a href="#">UChicago*</a>	6.5%	2,460	1,457	83.5%
<a href="#">Caltech*</a>	6.7%	536	244	45.5%
<a href="#">MIT</a>	4.1%	1,365	1,176	86.2%
Brown	5.5%	2,568	1,705	66.4%
<a href="#">Duke</a>	5.9%	2,911	1,744	59.9%
<a href="#">UPenn</a>	5.9%	3,304	2,418	73.2%
<a href="#">Dartmouth</a>	6.2%	1,750	1,228	70.2%
<a href="#">Northwestern</a>	7.0%	3,321	2,086	62.8%
<a href="#">Vanderbilt</a>	7.1%	3,368	1,626	48.3%
<a href="#">Johns Hopkins*</a>	7.5%	2,972	1,420	47.8%
<a href="#">Cornell</a>	8.7%	5,582	3,718	63.5%
<b>Average (Overall)</b>	<b>5.6%</b>	<b>2,581</b>	<b>1,749</b>	<b>64.3%</b>
<b>Average (Ivies)</b>	<b>5.5%</b>	<b>2,775</b>	<b>2,014</b>	<b>63.4%</b>

\*2022 data not yet available; 2021 data used instead





# QUESTIONS?

Thank you for coming!

We hope your student has a wonderful senior year!